



Te Poari Kaimātai
Hinengaro o Aotearoa

NEW ZEALAND PSYCHOLOGISTS BOARD

NZPB Advisory Group

Appointments Process and Panel

Contents

- — Advisory Group Life Cycle
- — Appointments Process
- — Appointments Panel Role and Function
- — Members of the Panel



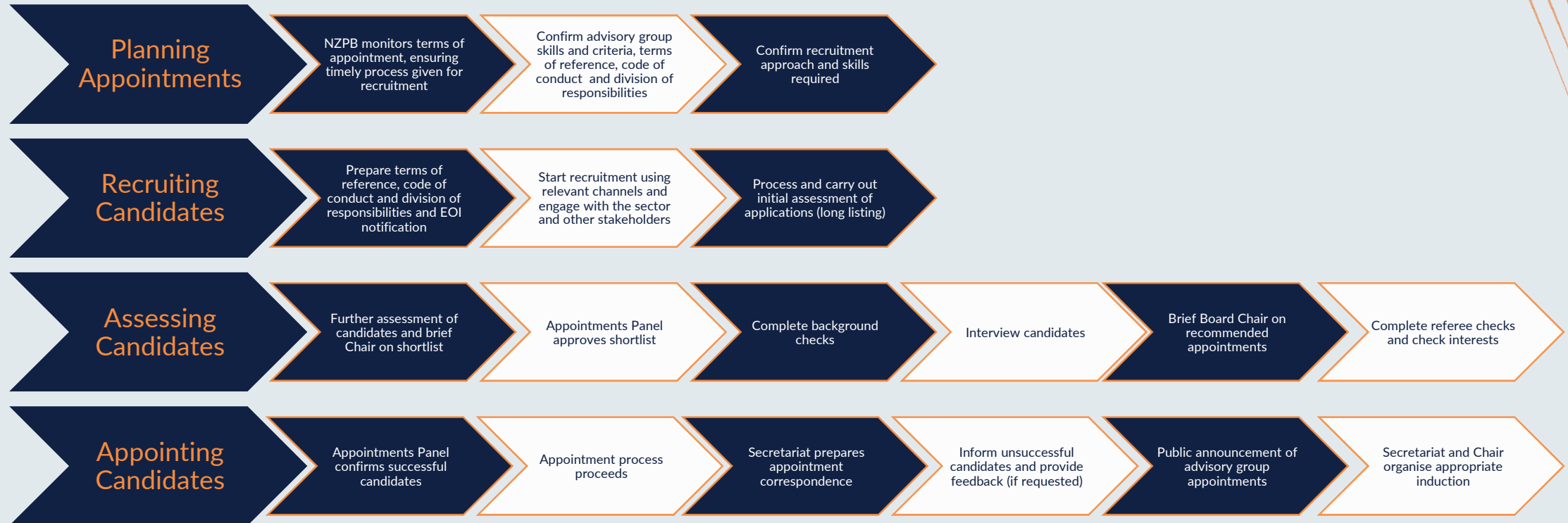
**Te Poari Kaimātai
Hinengaro o Aotearoa**

NEW ZEALAND PSYCHOLOGISTS BOARD

Advisory Group Life Cycle



NZPB Advisory Group Appointments Process



Appointments Panel Role and Function

- a) The objectives of the Appointments Panel is to establish the Advisory Group's composition, by evaluating the competencies required of prospective members and establishing their degree of skills, knowledge and experience for the role.

- b) The sole function of the Appointments Panel is to evaluate external candidates and where appropriate appoint the same member to the Advisory Group.

- c) The Appointments Panel is authorised by the Board to consult with such outside services for information and advice, as it considers necessary for carrying out its responsibilities.



**Te Poari Kaimātai
Hinengaro o Aotearoa**

NEW ZEALAND PSYCHOLOGISTS BOARD

Vanessa Simpson



Tumuaki/Pouroki (CE/Registrar)

NZPB

Vanessa is responsible for Secretariat Leadership and the regulatory functions of the NZPB. Vanessa joined the NZ Psychologists Board in October 2022 bringing a background of leadership and governance across the ambulance and health sectors.



**Te Poari Kaimātai
Hinengaro o Aotearoa**

NEW ZEALAND PSYCHOLOGISTS BOARD

Consumer Representative



Te Tāhū Hauora
Health Quality & Safety
Commission

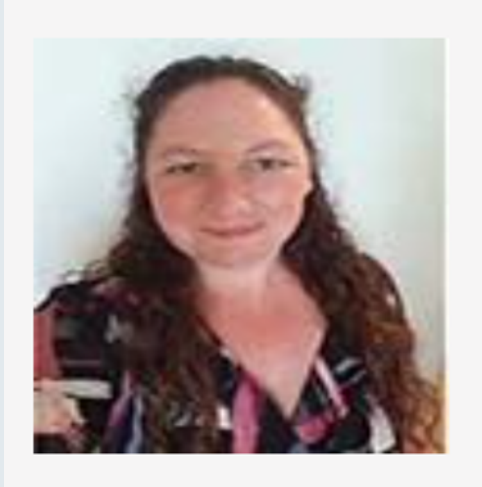
Te Tāhū Hauora support consumers being actively involved in decision-making about their health, at all levels and is publishing this opportunity on behalf of NZPB.



**Te Poari Kaimātai
Hinengaro o Aotearoa**

NEW ZEALAND PSYCHOLOGISTS BOARD

Veronica Pitt



Executive Director

New Zealand Psychological Society

Veronica joined the Society as its Executive Director in 2020 and is responsible for the management of the NZPS. She attended the University of Canterbury, followed by the University of Wyoming for her Bachelors of Commerce and Arts, and Master of Arts degrees.

Her career to date has been in the not-for-profit sector, working with Family violence prevention agencies in the Horowhenua and then moving through various governance and management roles with Playcentre Aotearoa.



**Te Poari Kaimātai
Hinengaro o Aotearoa**

NEW ZEALAND PSYCHOLOGISTS BOARD

Denise Kingi-‘Ulu’ave



Chief Executive

Le Va

Denise is a registered clinical psychologist of Tongan descent and the Chief Executive of Le Va, a national non-government primary prevention organisation. She has an extensive background in the Dept of Justice, DHB and primary mental health care services, working directly with those accessing services and supervising staff. Denise has led the design and development of two national suicide prevention programmes funded by the Ministry of Health: *FLO: Pasifika for Life* and *LifeKeepers*. Denise is a former member of the Suicide Prevention Mortality Review Committee, she currently Chairs a network of Pasifika psychologists called Pasifikology and is a member of the Mental Health reference group for the Abuse in Care Royal Commission of Inquiry.



**Te Poari Kaimātai
Hinengaro o Aotearoa**

NEW ZEALAND PSYCHOLOGISTS BOARD

Brian Emery



Cultural Advisor

NZPB

No Ngati Maniapoto, Ngati Matakore, Ngati Haua, Ngati Kauwhata. Ko Brian Te Rauroha Emery. Brian is an independent consultant, auditor and surveyor of health services for Nga Paerewa Health and Disability standards. Previously he was General Manager Support Services for Te Roopu Taurima o Manukau January 2012 to May 2013. Brian was Quality and Risk Manager from 2004 to 2012 for Te Roopu Taurima and Eastern Access Community Health, Melbourne. From 1997 to 2003 he was Manager Maori Mental Health, and Group Manager Maori Health at Counties Manukau DHB. From 1999 to 2005 he was auditor/surveyor/team leader for Quality Health NZ. He has served on several boards for schools, education and training, health services, disabilities, and Maori health.



**Te Poari Kaimātai
Hinengaro o Aotearoa**

NEW ZEALAND PSYCHOLOGISTS BOARD

Dr. Jane Freeman-Brown



Registered Clinical Psychologist (practicing), Mātai Hinengaro (Psychology Advisor)

NZPB

Jane advises the Board, the Secretariat, and the wider psychology community on professional aspects of complaints, competence, fitness, and registration matters, as well as any other issues arising that impact on the psychology profession. Jane is of Ngai Tahu iwi and is a registered clinical psychologist with 17 years of clinical experience in mental health and forensic settings. In addition to her clinical experience, she has steered her career to towards the interface between ethics and the law and has previously worked as a senior advisor to the Department of Corrections with a focus on psychological practice and psycho-legal issues. Jane has previously been the chair of the ethics committee of the New Zealand College of Clinical Psychologists.



**Te Poari Kaimātai
Hinengaro o Aotearoa**

NEW ZEALAND PSYCHOLOGISTS BOARD